

# INSIDE

A monarch butterfly with vibrant orange wings and black borders with white spots is perched on a cluster of small purple flowers. The background is a soft-focus green and purple garden scene.

## THE GARDENS

SPRING 2025 A QUARTERLY MAGAZINE FOR  
MEMBERS OF DENVER BOTANIC GARDENS



**Contents**

- Chatfield Farms ..... 2
- Exhibitions, Art and Learning Engagement..... 4
- Featured Garden..... 7
- Research & Conservation ..... 8
- Sustainable Landscaping..... 10
- Horticulture ..... 11
- Special Events ..... 12
- Featured Programs ..... 14
- Tours..... 16
- Family Corner ..... 17
- Trips & Travel ..... 18
- Volunteer ..... 19
- Donors ..... 20
- Tributes ..... 21
- Trustees ..... 21

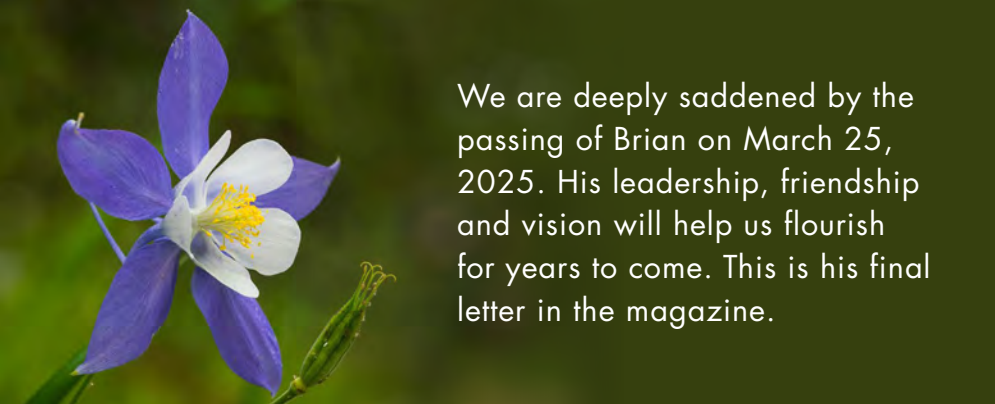
While it may not be true that timing is everything, it is certainly important. Take, for example, leadership of the Gardens. We have had outstanding board chairs for decades, and each one seems to step into the position at just the right moment. In January, we welcomed our new leader, Mary Lee Chin, who has been an engaged board member for over a decade. Her dedication, her compassion and her big vision for what we should be and can be made all the difference in her selection. Great example: She is committed to taking the Gardens to a new level of impact when it comes to mental health.

It's hard to imagine an issue more significant today than the restoration of people's ability to thrive in the modern world. The last several years have given us all new challenges, not the least of which was the impact of COVID-19. We know that coming through these times can be a precarious process for many of our members, volunteers, guests, staff and donors. The Gardens has become a refuge and a place for spiritual restoration. It is that deep sense of connection to nature that propels us forward to making decisions with better perspective and greater kindness toward all life on Earth. Mary Lee understands this deeply and will no doubt help us recruit the talented partners that we need to ensure that the Gardens does everything we can to help lighten the load of people who are carrying such enormous burdens today.

A personal note, I am always amazed when there is a selection process that leads to a candidate like Mary Lee and, when we pitch them on the idea, they say yes. It's a big responsibility and it's something no one has ever taken lightly. So, thank you for saying yes, Mary Lee. You have become not only a champion for the Gardens, but you have also become a great friend to many of us and an inspiration to all of us.

One more thought about timing: It turns out that in 2025 the Gardens celebrates 50 years of management of Chatfield Farms—just in the nick of time, as we will be cutting a ribbon on the phase one projects of the new Master Development Plan for Chatfield Farms this spring. Sometimes it takes a while—even 50 years—to take a giant step, but we're doing that now and it will mean tremendous new opportunities for all our members and friends.

Onward.  
 Brian Vogt  
 Denver Botanic Gardens CEO



We are deeply saddened by the passing of Brian on March 25, 2025. His leadership, friendship and vision will help us flourish for years to come. This is his final letter in the magazine.



# INSIDE THE GARDENS

ISSUE 2, 2025

**Denver Botanic Gardens**  
 1007 York St., Denver, CO 80206  
 Hours through May 10, 9 a.m. – 7 p.m., last admission 6 p.m.  
 May 11 – Sept. 1, 9 a.m. – 8 p.m., last admission 7 p.m.

**Denver Botanic Gardens Chatfield Farms**  
 8500 West Deer Creek Canyon Rd., Littleton, CO 80128  
 Pre-purchased tickets and advance member passes only.  
 Hours: 9 a.m. – 5 p.m., last admission 4 p.m.

**Check the website for early closures**

**General Information:** 720-865-3500  
**Class Registration:** 720-865-3580  
**Donations:** 720-865-3528  
**Gift Shop:** 720-865-3595  
**Membership Services:** 720-865-3525  
**Private Events:** 720-865-3551  
**Volunteering:** 720-865-3609  
**Helen Fowler Library:** 720-865-3570

**Visit Our Website for More Information:**  
**Gardening Help from Colorado Master Gardeners**  
**Kathryn Kalmbach Herbarium**  
**Sam Mitchel Herbarium of Fungi**

**Editor:** Tiffany Coleman  
**Graphic Designer:** Jessica Lammert  
**Photographer:** Scott Dressel-Martin

The mission of Denver Botanic Gardens is to connect people with plants, especially plants from the Rocky Mountain region and similar regions around the world, providing delight and enlightenment to everyone.

## DENVER BOTANIC GARDENS

botanicgardens.org



The Gardens is grateful for funds from the Scientific & Cultural Facilities District (SCFD), which enable us to expand services and enhance the quality of our programs and exhibits.



# MASTERFUL SPACES

*By Jen Lucas, Associate Director of Horticulture*



Robert and Judi Newman Welcome Center  
Photo by Grace Johnson

Amazing transformations are taking place at Chatfield Farms as phase one of the Master Development Plan nears completion. Among the finished projects are the Robert and Judi Newman Welcome Center, with paved and landscaped parking; Borgen Family Market Square, an outdoor event space; and a Rest Stop on the south side of the property. With the new buildings and event space came opportunities for additional gardens.

The Robert and Judi Newman Welcome Center is adorned with rain gardens, xeriscape gardens and the showpiece Crevice Garden that greets visitors as they enter Chatfield Farms. The rain garden captures and infiltrates stormwater runoff from the building and the parking area. The Welcome Center roof is designed so that all the rainwater drains on the west side, into the garden. Each swale in the parking lot is a rain garden, too, irrigated by storm water. The plant palette here mainly consists of native prairie plants, which have deep root systems that prevent erosion, help with filtration of pollutants and are more efficient at utilizing the water and nutrients available in our soil. These plants have also adapted to periodic drought but can handle occasional heavy precipitation events.

With fewer than 16 inches of annual rainfall, the Denver metro area's high plains environment demands water-wise landscaping. We planted a xeriscape garden at the front of the Welcome Center, featuring plants that thrive with minimal irrigation while providing color throughout the season. After passing through the Welcome Center, guests are greeted by the Crevice Garden—designed by Didier Design Studio in collaboration with our horticulturists—which showcases a distinctly Colorado aesthetic to drought-tolerant gardening.

The Borgen Family Market Square is designed with a large lawn, perfect for relaxing under unique shade trees. A pergola will provide a covered structure for musicians during Lavender Festival or other events that use this welcoming space. A large seasonal tent will house our weekly Community Supported Agriculture (CSA) distributions during the growing season and will be available for private rentals.

These exciting additions and changes bring new opportunities and experiences for visitors, volunteers and staff. We are all grateful to Brian Vogt, our CEO, who has supported this vision, and we appreciate the many generous donors who have helped create a beautiful and educational place for all to enjoy. Thanks also to G.H. Phipps Construction Companies for their work on another Denver Botanic Gardens construction project. Come to Chatfield Farms and see the new spaces—and gardens—for yourself.

# GROWING INSPIRATION – *American Impressionism*

## AND THE GARDEN MOVEMENT

By Katie Foster, Curatorial Coordinator

Impressionism revolutionized the art world when it emerged in France in 1874. Artists like Edgar Degas, Claude Monet and Pierre-Auguste Renoir broke away from traditional painting styles in favor of loose, visible brushstrokes and light-filled atmospheres. Instead of capturing precise and realistic details, Impressionism focused on rendering fleeting moments, movement and the ever-changing qualities of light and shadow.

After the American Civil War, many artists traveled to Paris to study in academies and museums. Impressionism made its mark on these artists, who adapted elements of its style to depict life back home in the United States. F. Childe Hassam, for example, painted bustling cityscapes that evoke the clamor and motion of urban life, whereas artists like Mary Cassatt and Frederick Carl Frieseke used Impressionist techniques to portray intimate, domestic moments.

Impressionism arrived in America at a time of major social and economic change. By the early 20th century, new railroad developments facilitated the growth of expansive suburbs outside of urban centers. Middle-class Americans found themselves with more land and leisure time. Gardening quickly became a national obsession, reflecting Progressive-era ideals that emphasized the beautification of public and private places and a renewed connection with nature. Unlike the meticulously manicured formal gardens of wealthy estates, middle class gardeners favored more personal spaces that felt like outdoor extensions of their homes. This collective fervor for gardening came to be known as the Garden Movement, and it laid the groundwork for the American lawns and gardens we think of today.

Impressionists preferred to paint *en plein air* (in the open air), and artists found inspiration in naturalistic gardens flourishing across the country. Some artists, like John Henry Twachtman, were avid gardeners themselves. His home in Greenwich, Connecticut, became a popular painting destination for fellow American Impressionists. Hassam, who spent summers in his studio on Appledore Island, Maine, summed it up best when he said, “Art is to me the interpretation of the impression which nature makes upon the eye and brain.”

American Impressionism and the history of American gardens are linked in surprising ways. Discover these connections and more at *Blue Grass, Green Skies: American Impressionism and Realism*.



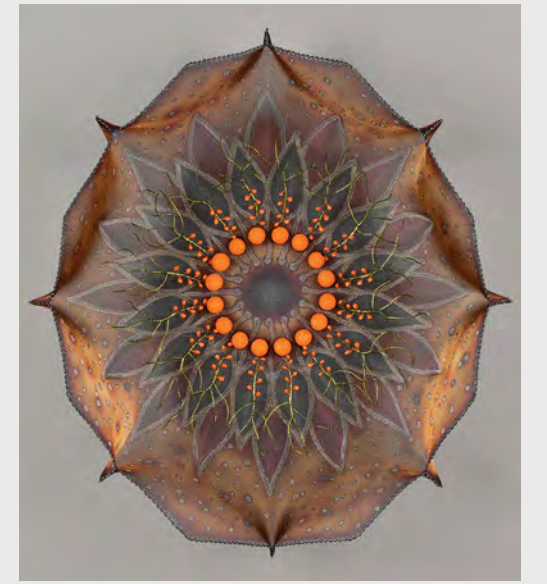
Evelyn McCormick, *Carmel Valley Pumpkins*, oil on canvas, ca. 1907. 32" H x 39" W. Los Angeles County Museum of Art. Purchased with funds provided by Robert and Kelly Day.



John H. Twachtman with his family on their front porch in Greenwich, CT, Mary Fanton Roberts papers, Archives of American Art, Smithsonian Institution.



Granville Redmond, *California Poppy Field*, oil on canvas, ca. 1926. 40 ¼" H x 60 ¼" W. Los Angeles County Museum of Art. Gift of Raymond Griffith.



Lanny Bergner, *Gaia's Crown*, stainless steel mesh, copper wire, brass wire, silicone and acrylic medium, 2024.

## COMING SOON

### **Blue Grass, Green Skies: American Impressionism and Realism from the Los Angeles County Museum of Art** June 7 – September 14

Featuring artwork by some of the most esteemed American Impressionists including Mary Cassatt, Childe Hassam, Ernest Lawson, John Henry Twachtman and William Wendt, this exhibit highlights how American artists embraced Impressionism to capture the beauty and emotion of countryside and city alike.

Outdoors in the gardens, seek out frames highlighting landscape vignettes and imagine your own Impressionist compositions.

*Blue Grass, Green Skies* was curated by Leah Lembeck, Department Head, European Painting & Sculpture and American Art, at the Los Angeles County Museum of Art. The exhibition is organized by the Los Angeles County Museum of Art and generous support for this project was provided by Art Bridges.



### **American Impressionist Lecture Series** Wednesdays, June 11, July 16, August 21 and September 11, 6:30-8 p.m. \$25, \$20 member

Discover American Impressionist artists and learn about the history of American gardening in this four-part lecture series.

### **American Impressionism: Garden to Gallery Tour** Various days and dates, 5:30 p.m. \$40, \$30 member, \$10 student

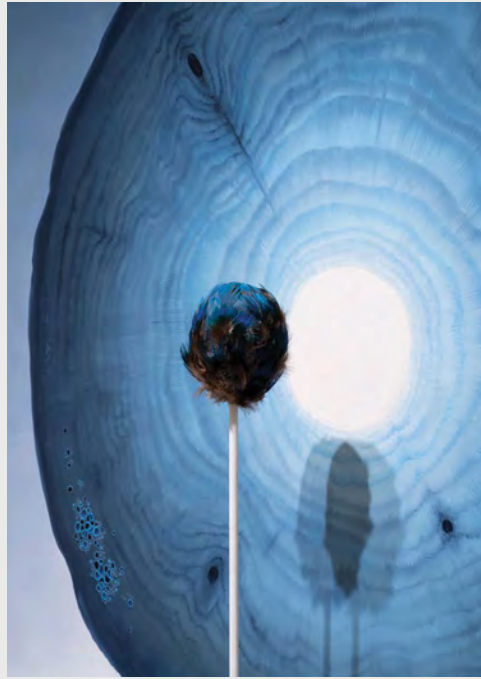
The journey begins in the gardens, where nature's awe-inspiring colors, textures and lines set the stage before moving into the Freyer – Newman Center art galleries.

### **Impressionism-Inspired Painting in the Gardens** June 21, July 26, August 3 and September 7, 9:30 a.m. – 12:30 p.m. \$60, \$50 member

Take inspiration from the *Blue Grass, Green Skies* exhibition, then head outside to paint *en plein air*.

### **Contemporary Fiber: Botanicals** May 17 – September 28

Inspired by the world around us, this exhibition features artwork made with fiber materials and innovative textile techniques. An international juried exhibition created in partnership with Fiber Art Now magazine, *Contemporary Fiber* represents an array of artists working in fiber with nature as their muse.



Ash Eliza Williams, *Tree Language* (detail), oil paint, clay and ethically sourced feathers, 2024.



Meredith Feniak, *Mikado California Poppy*, watercolor, 2015. Artwork © Botanical Interests LLC.



Anna Kaye, *Dusky and checkered wings*, charcoal, 2020.

## CURRENT EXHIBITIONS

### Language Without Words: Works by Ash Eliza Williams

Through May 4

Encounter a world inhabited by sun, stone, weather and the intricate living tapestries of tiny organisms. Rediscover the world around you through Ash Eliza Williams' paintings and sculpture and reconsider the natural world through the eyes of its non-human inhabitants.

### Seeds of Inspiration

Through May 20

Explore botanical art used to inspire gardeners across the nation. Featuring artwork from the collection of Colorado-based seed and garden products company Botanical Interests LLC, this exhibit highlights the unique connection between art and nature visible in seed packet design.

### Anna Kaye: Finding Light

Through May 20

Engross yourself in detailed charcoal drawings exploring loss and regrowth. Anna Kaye's artworks highlight hope and transformation as life returns to damaged landscapes.

#### Related Program:

#### Art-Science Talk: Anna Kaye and Christina Alba

Wednesday, April 16,  
6:30-8 p.m.

Artist Anna Kaye and Christina Alba, associate research scientist at Denver Botanic Gardens, join forces to discuss wildfire ecology in the West.

# CRAFTING CREATURE COMFORTS

By Kevin Philip Williams, Manager of Horticulture

Reimagining the Birds and Bees Walk challenged us to explore how human creativity can merge with natural processes to foster biodiversity. To that end, we installed an eclectic array of diverse structures—such as insect hotels, material libraries, standing dead wood, rock piles, brush piles, dead hedges and log walls—to create complex habitats where life can thrive. Each feature reflects the unique shelter needs of multitudes of species: arthropods nest in plant stems, leaf detritus, and hollow branches; birds and mammals take refuge in tangled brush and gather fibers for nests; amphibians seek cool, damp spots, while reptiles bask on sun-warmed surfaces.

One of the largest structures in the garden, the “wood wave,” is a prime example of a structure teeming with inner life. This 25-foot dead hedge, woven from pruned branches and garden debris, offers countless crevices and hollows for shelter and nesting. Another habitat structure, the “cocoon,” serves as an extensive material library—a place where creatures can gather what they need to build shelter. Often dismissed as waste or mulch, organic materials like leaves and pine needles are offered up in woolen pockets, alongside fibrous materials like grass, cotton and flax that hang throughout the structure.

These organic structures blend artistry with ecological function, highlighting the beauty in spaces created for non-human inhabitants. True beauty emerges when we consider what other beings find beautiful, what they find useful, what attracts them. By embracing this perspective, we cultivate a deeper connection with the natural world, supporting life through thoughtful, intentional design.



# NEW PARTNERSHIPS TO IMPROVE URBAN WILDLIFE HABITAT: BOTANIC GARDENS AND GOLF COURSE ASSOCIATIONS

*By Rebecca Hufft, Associate Director of Climate Resilience*



Photos by Leah Veldhuisen

As we work to conserve and restore wildlife and ecosystems, urban areas become progressively more important areas of focus. Denver Botanic Gardens has partnered with the Colorado Golf Association to boost biodiversity on CommonGround Golf Course, located on the former Lowry Air Force Base straddling the cities of Aurora and Denver. While the golf course is already home to deer, coyotes, hawks and other wildlife, we aim to increase native plant diversity in these areas to create better habitats, especially for pollinators.

Following a floristic inventory of the golf course in 2022, we trialed a seeding experiment in the rough areas to enhance plant diversity. We are testing methods that utilize existing course equipment and can be easily implemented at other sites. Without removing the existing turf, we created minimal soil disturbance through harrowing and aerating before scattering a native forb (flowering plant) seed mix in December 2022. While still early, results suggest this low-impact approach is successfully promoting forb germination. To further support establishment, we are also mowing to prevent non-native grasses from going to seed and encourage continued growth of the native forbs.

Last summer, we observed pollinators to establish baseline data for the site and see if our initial efforts are having an impact on their visitation. Even with minimal native forb growth in these plots, both bee activity and overall pollinator visitations rose. Surprisingly, despite the overall low density of plants that emerged from the seeding treatment, there was a significant increase in pollinators observed relative to the unseeded plots. This shows that even a modest increase in forbs can improve pollinator numbers. Ideally, we would see a greater visual impact and higher density of native plants in the restoration plots. However, this pilot experiment demonstrates that this relatively easy and inexpensive way to improve habitat works for pollinators. This technique could be useful in areas where additional site preparation is not feasible or as a temporary solution until larger restoration and clearing of existing vegetation can take place.

We will continue developing methods that improve habitat on golf courses and similar areas so this work can be scaled up. Golf courses are one of the largest open spaces in urban and surrounding areas. They provide wildlife habitats and corridors and present a partnership opportunity for public gardens to improve biodiversity and strengthen conservation efforts while engaging with and educating new audiences.



# SUSTAINABLE BEAUTY

By Blake Burger, Associate Director of Horticulture and Curator, and Julia Pearson, Horticulturist



Turf grass requires frequent watering, which can strain local water resources, especially during Colorado’s hot summer months. Denver Water estimates that 50% of the annual water usage of single-family households is applied to lawns and other outdoor areas. By selectively replacing traditional grass with low-water perennials, we can significantly reduce water consumption and lower water bills—an eco-friendly choice that supports sustainability and cost savings.

As part of our [commitment to sustainability](#), the Gardens removed the turf on the east side of the York Street right of way in 2023. The turf previously required an average of 180,000 gallons of water per year. In the first year after converting the area to mixed perennials, water usage dropped dramatically to approximately 47,000 gallons. The following year, due to an unusually hot summer, usage rose to 101,000 gallons—but this was still a substantial reduction compared to the original turf requirements.

In addition to water savings, replacing grass with perennials fosters greater biodiversity. Turf grass, often composed of a single species, provides limited habitat for local wildlife. By replacing it with a diverse range of plants, which are adapted to the

unique conditions of Denver’s urban areas, we can create habitats for pollinators, birds and beneficial insects. The varied plant life also helps support soil health and promotes a more resilient ecosystem.

This transformation enhances the beauty of our urban landscapes as well. Dry shade perennials such as *Corylus avellana* 'Contorta' (corkscrew hazel), *Anemone hupehensis* (Japanese anemone) and *Ceratostigma plumbaginoides* (hardy plumbago) offer a range of seasonal interest with varied textures and colors, providing a lush and vibrant appearance that changes throughout the year. Sun loving plants, such as *Ericameria nauseosa* var. *nauseosa* (rabbitbrush), *Prunus pumila* var. *besseyi* (Western sand cherry) and *Epilobium canum* ssp. *garrettii* (ORANGE CARPET® hummingbird trumpet) are great options for hot sidewalk-adjacent areas. This transformation not only improves the visual appeal of streets but also contributes to the overall greening of Denver’s urban spaces.

Water conservation is essential in Denver’s semi-arid climate. Swap turf for low-water perennials and create a smart, sustainable landscape that is also beautiful and low-maintenance. It benefits both the environment and the community.

# GROSS, WHAT'S THAT SMELL?

By Scott Preusser, Assistant Curator

The compulsion to smell a stinking flower is as irresistible as the morbid curiosity that draws people to the aftermath of a car crash. Sapromyophily is the ability of a plant to attract carrion beetles and dung flies for pollination through mimicry of their food and brood sites. Sapromyophilous flowers, also known as carrion, corpse or stinking flowers, emit an odor that smells like rotting flesh and feces, which first attracts and then tricks scavenging flies and beetles into performing the important task of pollination. Some of the more popular genera that utilize this deceptive strategy include: *Amorphophallus*, *Rafflesia*, *Crassula*, *Stapelia*, *Huernia* and *Bulbophyllum*.

New research has shown that the odor is often combined with additional tricks that contribute to the mimesis of a decaying corpse, such as flowers in shades of red, brown and purple, and setae, the short fuzzy hairs that wave like emerging fly larvae. The smell is thick and foul: like magnified body odor with about 31% rotting fish on top.

Gas Chromatography-Mass Spectrometry (GCMS), a technique used to identify and analyze scent compounds, detected 123 of the 152 volatile compounds in these flowers. Interestingly, both fungus and flowering plants (angiosperms) share scent compounds identical to those found in true carrion and feces. These means of attracting pollinators are very effective and scientists now know that successful pollination depends heavily on the emission of volatile compounds. As Shakespeare wrote, “A rose by any other name would smell just as sweet” – but the same could be said for the stench of these flowers.



Photos by Scott Preusser



# SPECIAL EVENTS

SPECIAL EVENTS



## EARTH DAY CELEBRATIONS AT YORK STREET AND CHATFIELD FARMS

**Tuesday, April 22, 9 a.m. – 3 p.m.**  
SCFD Free Day

Celebrate Earth Day with the Gardens. Play, interact with nature and grow a deeper connection to the world around us.



## BUTTERFLIES AT CHATFIELD FARMS

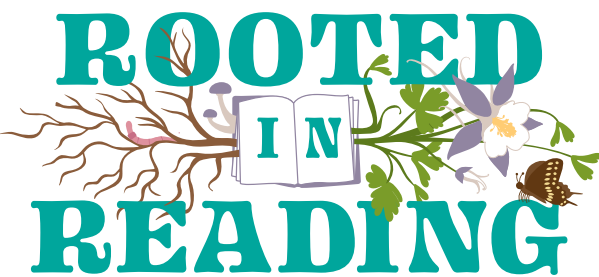
**Friday, May 23 member preview | Saturday, May 24 open to public**  
Included with admission

This whimsical, seasonal habitat is home to hundreds of native butterflies such as swallowtails, monarchs, mourning cloaks and painted ladies. Learn what types of plants you can add to your own garden to attract butterflies and other pollinators.

## ROOTED IN READING

**Sunday, April 27, noon – 3 p.m.**  
Free, no Gardens admission required

Join the Helen Fowler Library for an interactive event focusing on the joy of children's books, art and creative writing. Ideal for children ages 6-12, the event includes drop-in activities as well as instructional sessions on drawing and writing. Authors and illustrators will be on site in the Freyer – Newman Center to share their books and answer questions from young artists and writers.



## EVENINGS AL FRESCO

**Summer, various dates, 5-9 p.m.**  
\$32, \$22 member

Pack a picnic and wander the Gardens during the golden hour on these relaxing evenings of live music. Produced in partnership with Swallow Hill Music, each night features a vibrant mix of talented local musicians performing unamplified against a stunning backdrop of peak summer blooms.

Member ticket pre-sale is May 14-16, depending upon membership level. Public ticket sales start May 19.

## SPRING PLANT SALE

**May 9 & 10, 8 a.m. – 5 p.m., 8-9 a.m. members only**  
Free, reservations required

The Gardens transforms for our annual Spring Plant Sale. Speak with our plant experts and horticulturists as you browse 15 different divisions spread across our York Street location. Peruse extensive offerings of unique native, steppe and adapted plants curated to thrive in Colorado's climate. Whether you're looking to reimagine your landscape, start a veggie garden or find the perfect houseplant, we have something for you. **Members save 10% on all purchases.**

Member reservations available April 23-25 by level.  
Public reservations available starting April 28.

## SPRING PLANT SALE PREVIEW PARTY

**May 8, 4-7:30 p.m.**  
\$60 advance, \$65 at the door (if available)

Don't miss the Preview Party for early access to the sale! Enjoy the first pick of plants along with tasty treats and beverages. Tickets go on sale April 8.



## SUMMER CONCERT SERIES

**PRESENTED BY UMB BANK**  
**PRODUCED IN PARTNERSHIP WITH SWALLOW HILL MUSIC**

### FEATURING

Mary Chapin Carpenter and Brandy Clark  
California Honeydrops  
Melissa Etheridge  
And more!

Experience performances by top recording artists in an unparalleled venue: the UMB Bank Amphitheater in the heart of the Gardens at York Street. Bring a picnic to enjoy on the lawn or purchase food onsite or in advance online. Stroll leisurely through the gardens before the show. Alcohol not available for purchase onsite; BYOB allowed.

Member ticket pre-sale is April 23-25, depending upon membership level. Public ticket sales start April 28.





## POLLINATOR DAY AT YORK STREET

Friday, June 27

Included with admission

Learn and play alongside educators and activists from partner organizations. Art activities, free tours, music and games inspire new ways to notice, appreciate and support all the critters that pollinate our plant friends.

## LAVENDER FESTIVAL AT CHATFIELD FARMS

Saturday & Sunday, July 19 & 20, 9 a.m. – 4 p.m.  
\$7-\$17, must purchase tickets in advance

Experience more than 2,000 lavender plants in peak bloom at this annual festival. Vendors sell all types of lavender-themed products from lotions and soaps to edible delights and wearable goods. Enjoy live music and food and drink vendors throughout the two-day event, plus demonstrations and classes. Chat with our gardeners and farmers. There are even activities for kids—so there's truly something for everyone. Be sure to purchase tickets early!

Member pre-sale is May 14-16, based on membership level. Public ticket sales start May 19.



## CHILDREN & FAMILY PROGRAMS

### Strolling Stories at Chatfield Farms

Tuesdays, April and May,  
9:30 a.m. and 10:45 a.m.

\$11, \$9 member

Story time combined with nature hikes. Investigate nature as it changes with the seasons. Along the trail we stop to read a seasonally themed story and then continue our adventure with an exploration based on the day's book. Best for families with preschoolers ages 3-6.

### Cub Scout Make and Take: Tabletop Greenhouse Gardens

Saturday, April 12, 9:15 a.m.,  
10:45 a.m. and 1 p.m.

\$12 per project

All levels of Cub Scouts are invited! Plant seeds in eco-friendly seed-starting pots and then build a miniature tabletop greenhouse to take home. Then explore the Gardens with a scavenger hunt that investigates plants as they prepare for the changing seasons. Pre-registration is required.

### Girl Scout Juniors: Create a Garden Exploration Day

Saturday, May 17, 9 a.m.,  
10:45 a.m. or 12:45 p.m.

\$12 per scout, \$7 per adult,  
\$7 non-participating sibling

Discover the basics of garden design and learn how to plan for a successful garden. Plant and decorate a miniature container garden to take home. This program supports the Juniors Gardener Badge. Pre-registration is required.

## ADULT PROGRAMS

### Rooted in Clay: Ceramics Workshop with Stone Bear Studios

Friday, April 25, 9:30-11:30 a.m. or  
Wed, May 21 or June 18, 5:30-7:30 p.m.

\$90, \$85 member

Join the staff from Stone Bear Studios to create a clay masterpiece inspired by our natural surroundings. Each month will showcase different techniques and projects.

### Hypertufa Container – Make and Plant Your Own (Two-day workshop)

Friday, April 25 & May 2, 10 a.m. – noon

\$56, \$52 member

Learn the technique for making your own lightweight hypertufa pot. Once the containers dry and cure, we meet again to plant and top-dress your new creation. All materials to make your pot plus a wonderful selection of plants are included.

### Embroidery as Meditation: Connecting to the Natural World

Thursday, May 15, 22 & 29, 4-6 p.m.

\$108, \$103 member

With the plants at the Gardens as inspiration, use various techniques to create patterns and shapes and then translate into embroidery pieces.

### Journaling for Beginners

Wednesday, May 14, 6-7:30 p.m.

\$35, \$30 member

Discover the various types of journals you can keep and reap the benefits of creating a journaling practice, such as organization, emotional processing and inspiring creativity.

### Exploring Cheeses with So Damn Gouda

Wednesday, May 21 or June 18, 5-6 p.m.

\$42, \$38 member

Learn about the main cheese-making regions and the history of cheese. Sample 5-6 pairings that exemplify the region of the month. If you have a favorite bottle of wine that you like to pair with cheese, bring it!

## SCHOOL OF BOTANICAL ART & ILLUSTRATION

### SBAI Sponsors Crested Butte Wildflower Festival

July 11-20

We're thrilled to return to Crested Butte this July to offer over a dozen guided hikes and botanical art workshops like a half-day introduction to botanical illustration, nature journaling, printmaking and DIY kaleidoscopes. Join us in the mountains at the peak of wildflower season – [register through the festival](#) to support SBAI's continued growth.





## EXPLORE OUR WEEKLY PUBLIC TOURS:

- Art at the Gardens
- Natural History Collections
- Seasonal Discoveries
- Tropical Trails

## STAFF-LED TOUR EXPERIENCES

\$22, \$15 member, \$10 student

### The Science of Seeds

Wednesday, April 9, 2 p.m.

Peek behind the scenes and explore plant conservation efforts in action with Seed Conservation Research Associate Alex Seglias.

### Green Roof Gardening

Wednesday, June 25, 10 a.m.

Explore Mordecai Children's Garden, a three-acre green roof, on this tour for adults with Horticulturist Elena Shtern.

### Sensational Scents

Friday, May 30, 10 a.m.

Immerse yourself in nature's aromatic symphony, where spicy herbs sing, citrus blossoms beckon and lilacs unfold their fragrant lullabies.

### Colorado Ecosystems

Wednesday, June 11, 10 a.m.

Join Horticulturist Elena Shtern and experience Colorado's life zones, from the plains to the alpine and everything in between.

### Curator Conversations

Thursday, June 12, 10 a.m.

Stroll through current art exhibitions in our Freyer – Newman Center galleries with a curatorial staff member.

### Native and Naturalistic Gardening

Wednesday, June 18, 10 a.m.

Explore the beauty of gardens designed to mimic the rhythms and diversity of nature.

## NEW! ¡NUEVO!

Guided garden and gallery tours are now offered in Spanish. Help us spread the word!

### Visitas Guiadas de Arte en Español

Friday, June 13, 2 p.m.

### Visitas Guiadas: Maravillas de la Temporada

Fridays at 11 a.m., April 18, May 16, June 20

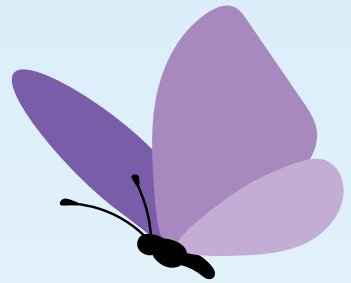


# THE POLLINATOR PIT STOP

## IN TWO STEPS



By Helena Nitz, Family and Children's Program Coordinator



Whether they are a floating butterfly or a buzzing bee, pollinators are popular! To say thank you for all the hard work our pollinators put into helping our plants reproduce and grow, let's create a place for them to rest and refuel.

### Materials:

- Small bowl
- Tray (an old container lid works great!)
- Rocks
- Fruits and citrus



### 1. Create a water station

Fill the small bowl with water and arrange the rocks to provide a landing pad for pollinators to rest while grabbing a drink of water.

### 2. Prepare a sweet treat

Arrange slices of orange, berries and even overripe bananas on the tray. Pollinators will enjoy snacking on their sweet juice.

By creating a Pit Stop, you can help our pollinators take a much-deserved break and watch as bees, butterflies and maybe even hummingbirds stop by!





Eastern Turkey

Photo by Viranatura Tours



Oaxaca, Mexico

Photo by Jhovani Morales



South Africa

Photo by Kirstenbosch National Botanical Garden

# EXPLORE THE WORLD WITH DENVER BOTANIC GARDENS

GET [FULL DETAILS AND REGISTER](#) ON OUR WEBSITE.

## Botanical Wonders of Eastern Turkey

May 8-21

Explore the steppes of Turkey with Curator of Steppe Collections Mike Bone and renowned plantsman Christopher Gardener. Turkey is at a convergence of two different floristic regions, the Mediterranean and the steppes of Asia. The result is an incredibly diverse plant palette. Begin in Cappadocia with its ancient cultural and geological wonders and floral treasures. Then explore the montane steppe in eastern Turkey, where many transition zones give rise to wildflower displays. Travel through Turkic villages and explore mountains and fertile valleys in search of natural wonders.

## Magical Mexico: Oaxaca

July 18-23

Experience La Guelaguetza, the colorful celebration that brings together Oaxaca's 16 ethnolinguistic groups, who share their unique dances and traditions in a dazzling display of cultural pride. Then explore Oaxaca's rich artistic and culinary heritage. From meeting skilled artisans in nearby villages to participating in a traditional cooking class, this curated tour immerses you in the heart of Oaxaca's culture. Join Reefs to Rockies and Associate Director of Community Relations Yvonne Garcia Bardwell for this opportunity to experience the true spirit of La Guelaguetza and the vibrant traditions that make Oaxaca unforgettable.

## Cape Floral Region Botanical Safari with Optional Game Reserve Extension

Main tour: September 15-25

Extension: September 25-29

The Cape Floral Region of South Africa is celebrated worldwide for its fascinating and diverse plant life—more than 9,000 species in all, over two-thirds of which are only found there. South Africa is renowned for its dynamic and evocative contemporary art scene, world-class galleries and museums. Associate Director of Learning Engagement and Interpretation Hannah Craft leads a botanical safari to the Cape's sculpture gardens, picturesque estates in the Cape Winelands, the incomparable Kirstenbosch Botanical Garden and the five-star eco-paradise Grootbos Private Nature Reserve. An optional extension explores Phinda Private Reserve, a stunning landscape with lions, leopards, elephants, Cape buffaloes and rhinos.

## Magical Mexico: Mérida

October 29 – November 4

Experience the magic of Mérida with Denver Botanic Gardens on a journey blending rich Mayan culture, gastronomy and history. Celebrate Día de los Muertos, explore the legacy of salt and sisal industries, and discover the secrets of Yucatán's renowned honey production. This immersive trip offers a sensory feast, connecting you to the heart of Mayan Mexico. Denver Botanic Gardens' Associate Director of Community Relations Yvonne Garcia Bardwell hosts.

# VOLUNTEER WITH US!

The Volunteer Services team is gearing up for a busy spring season – a perfect time to join us as an ongoing volunteer! Volunteers support horticulture, educational programming, the visitor experience and so much more. For more information on the Gardens' volunteer program and specific details on both ongoing and special event volunteer opportunities at York Street, Chatfield Farms and Plains Conservation Center please visit us at [Denver Botanic Gardens Volunteer Program](#) or email us at [vol@botanicgardens.org](mailto:vol@botanicgardens.org).



## NEW TICKETING SYSTEM



Beginning March 19, we're launching a new ticketing system, designed for a smoother and more intuitive online experience. Your membership details, including level and expiration date, will be automatically transferred. Denver Botanic Gardens Mobile App will be discontinued. However, you'll be able to save your membership card and tickets to your Apple or Google Wallet.

Keep an eye on your email for details. If you have questions, our Resource Center is here to help at 720-865-3500. Thank you for your patience during this transition and we look forward to sharing this new experience with you!

## Donors of Distinction

*Gifts Received November 1, 2024 – January 31, 2025*

Citizens of the Scientific & Cultural Facilities District  
 Anonymous  
 Aaron Rashti Family Foundation  
 Ms. Lorraine Adams and Ms. Deborah Horner  
 Katherine and Paul Aertker  
 Alpenglow Foundation  
 American Endowment Foundation  
 Gail Anderson and Barbara Edwards  
 Greg P. Anderson  
 Anonymous  
 Danielle Antley and Britt Antley  
 Applewood Seed Company  
 Liz Armstrong  
 James Arnone and Jon Purpura  
 Pauline Ayers-Menk  
 Andy Bachmann  
 Dennis Baldwin  
 Bank of America  
 Timothy Barbari  
 Mrs. Laura P Barton and Mr. William C Matthews  
 Kate Birmingham  
 Mr. and Mrs. Bennett Bertoli  
 Alison and Thomas Betts  
 Ms. Gwendolyn T. Black  
 Dawn Bookhardt  
 Borgen Family Foundation  
 Dorothy Borland  
 Richard Bourquard  
 Mr. Jay Brown and Allison Herren Lee  
 Bruce and Ann Bachmann Family Foundation  
 Dr. Leo P. Bruederle  
 Mark and Jan Bundy  
 Mr. and Mrs. James Burdick  
 Mrs. Cameron Burn  
 Jim and Sharon Butler  
 Butler Rents  
 Mrs. Patricia Buys  
 Frank and Jen Callahan  
 Christopher and Regina Carlson  
 William and Kaley Carmichael  
 Lee Ann Cast  
 Ellie Caulkins  
 Caulkins Family Foundation  
 Kristine Chan-Lizardo  
 Charities Aid Foundation of America  
 Charles H. Kurtz Family Foundation  
 Janette W. Chase  
 Susan and Lorin Chevalier  
 The Chill Foundation  
 Cisco Systems, Inc.  
 City of Lakewood  
 Carol J. Clarke  
 Mr. and Mrs. Bruce Clinton  
 The Clinton Family Fund  
 Brodie Cobb and Elizabeth Ohm  
 Colorado Center for Reproductive Medicine  
 Colorado Gives Foundation  
 Community Foundation of Boulder County  
 Community Foundation for Northeast Georgia  
 Pete and Marilyn Coors  
 Thomas and Suzanne Coxhead  
 Jennifer Crossett  
 Tara and Nathan Curry  
 DAFgiving360  
 Ann B. Mills Donor Advised Fund  
 Ann Sperling Charitable Account  
 Brian and Cynthia LeFevre Charitable Fund  
 Chris and Gina Carlson Donor Advised Fund  
 Ferguson Family Fund  
 John McKinney Donor-Advised Fund

Karyn T O'Neil Charitable Fund  
 Morss Dehncke Fund  
 Shebown/Stempien Fund  
 Daniels Family Charitable Trust  
 Kathy and Dave Dean  
 Raylene Decatur  
 Linda DeHart and Lisa Prang  
 Denver Botanic Gardens Guild  
 The Denver Debutante Ball  
 Denver Elections Division  
 The Denver Foundation  
 Chispa Fund  
 Garbe Family Fund  
 Giddy Up Fund  
 I See The Moon Fund  
 Thomas and Beatrice Taplin Fund  
 The Mojo Charitable  
 Walter C. Emery Family Foundation Fund  
 Marguerite and Tom Detmer  
 Catherine Dews Edwards and Philip Edwards  
 Lynne Doherty and Kevin McDonald  
 Valerie Dolejsi  
 Mr. James G. Dulin and Ms. Janet A. Rey  
 Ms. Emily Dunn  
 Roger Dunn and Jim Liechte  
 Dunn Family Foundation  
 Mr. and Mrs. Fred Ebrahimi  
 Ebrahimi Family Foundation  
 Echter's Nursery & Garden Center  
 Edward Jones  
 Edward Jones Charitable Gift Fund  
 Roger Dunn Giving Fund  
 Elevated Third  
 Melissa K. Eliot  
 Britten Elizabeth  
 Lisa and Matt Emerson  
 Victoria Emery  
 Epic Gardening  
 Victoria and Stephen Eppler  
 Trent Erway  
 Estate of Christine L. Honnen  
 Zach Etelman  
 Expedia Inc.  
 Fairfield and Woods, P.C.  
 Ruth Falkenstein  
 Jack & Leslie, Morey & Allison, and Mark & Andrea Ferguson  
 Fidelity Brokerage Services  
 Fidelity Charitable Gift Fund  
 Ben Garnett Charitable Fund  
 David Vermeer Charitable Fund  
 Judith Seaborn Charitable Gift Fund  
 My Choice  
 Ross Family Charitable Trust  
 Susan and William Fink Fund  
 Zig-a-zig-ah Fund  
 Ted Fidger  
 Valerie and Shelley Finberg  
 Mr. and Mrs. William Fink  
 John and Sarah Finn  
 Firman Fund  
 Ms. Tamara Fischer and Mr. Jeff Kellogg  
 Ms. Cory Freyer  
 Mr. and Mrs. John E. Freyer  
 Mr. and Mrs. Robert K. Fuller  
 Beth and David Gaboury  
 Gaboury Family Foundation  
 Peter T. Gadwa  
 Laurie Galbreath  
 Mrs. Margaret Garbe and Dr. Rick Garbe  
 Benjamin Garnett  
 Heidi Garwood and Stuart Horowitz  
 George and Barbara Kovacs Family Fund  
 GH Phipps Construction Companies

Jillian Gibbs  
 The Gilman Family Foundation  
 Dr. Alan Glickman and Nanette Santoro  
 Ms. Elizabeth L. Grant  
 Newell Grant  
 Ryan Gregory and Dr. Tara Gregory  
 Ms. Bonnie L. Haase  
 HALCYON, a hotel in Cherry Creek  
 Thomas Haller and Kim Patmore  
 Tess Hallinan  
 Kali and Duncan Handford  
 Patricia Hannington  
 Bill H Haring and Patta Nan Lee  
 Jenna Harris and Dillon Teske  
 Karin and Kent Harvey  
 Nancy Hauter and David Stevens  
 Susan and Michael Hawes  
 Jamie Hawkins-Fink  
 Dr. Kristy Hawley and Brian Schratz  
 Dr. Frederick B. Hebert  
 Gerard F Heeley and Paul J Newman  
 Arlene and Barry Hirschfeld  
 Doug and Kathy Hodgson  
 Roger Dunn and Jim Liechte  
 Mr. and Mrs. Graham E. Hollis  
 Hollis Family Fund  
 Duncan Holmes  
 Mrs. Ruth Hopfenbeck  
 Elsie Humes  
 Kathryn Huwaldt  
 Mr. and Mrs. Michael Imhoff  
 Jacquard Hotel & Rooftop  
 Diane and Larry Jensen  
 J.M. Jones and Jim Mohle  
 Karen Jones  
 Delphine and Chris Kahler  
 Amy Kahn  
 Mr. Donald J. Kany and Mrs. Susan C. Kany  
 Karen J. Glanert Charitable Trust  
 Bob and Wendy Kaufman  
 George Kemp  
 Carla Y. Kennedy  
 Ms. Lisa Kerns  
 Colleen Kessenich  
 Lisa Anne Kessler and Robert Kessler  
 Kevin and Kristen Leddy Charitable Fund  
 Ms. Mareill Kiernan and Mr. Matthew Ballard  
 Mike and Sarah Killion  
 Kevin and Dorota Kilstrom  
 Peter J. Kirsch and Pat Reynolds  
 George and Barbara Kovacs  
 Dr. Anne Kubik  
 Mr. and Mrs. Frank A. Kugeler  
 Dianna L. Kunz  
 Mr. and Mrs. Charles H. Kurtz  
 Lori and Bill Kurtz  
 Mr. and Mrs. Jerry D. Ladd  
 The Ladd Foundation  
 Land Title Guarantee Company  
 Christopher K. M. Leach and Chad Skrbina  
 Kristen and Kevin Leddy  
 Cynthia and Brian Lefevre  
 Penny Lewis  
 Joanna Widmann  
 Catherine and Jayson Lipsey  
 Karen E. Lochbaum and Thomas Shallow  
 Daniel Lutz  
 Mr. and Mrs. Robert L. Manning, Jr.  
 The Marcus Foundation  
 Marczyk Fine Foods  
 Mr. and Mrs. Stephen S. Marsters  
 Marguerite and Max Martin  
 Mrs. Sharon Martin

Terry Mather  
 Charles Maurer  
 Douglas R. McCallum and Diana L. Neff  
 Ann McCloskey and Kevin Lacey  
 Eihel and Maisie McGlynn  
 John McKinney and Joan Shea-McKinney  
 Carrie and Michael McLaughlin  
 William McNitt and Cassidy McNitt  
 The Louis R. & Dorothy M. Meister Foundation  
 Melville Foundation  
 Joanne Meras  
 William Meyer  
 Anne B. Mills  
 Dee Milstein  
 Megan Mistler and Scott Chrisbacher  
 Mistler Family Foundation  
 Mrs. John C. Mitchell, III  
 Michael Montecillo and Whitney Drucker  
 Montecillo Foundation  
 Mr. and Mrs. Adam Mordecai  
 Sarah Morgan and Oscar Brown  
 Morgan Stanley Global Impact Funding Trust  
 Ms. Kim Morss and Mr. Richard Dehncke  
 Liz Mount  
 Mountain Sun Pubs & Breweries  
 Mahak Mukhi  
 National Christian Foundation Orlando  
 The Lipsey Giving Fund  
 National Endowment for the Arts  
 National Philanthropic Trust  
 BMO Donor Advised Fund  
 Kennedy Charitable Fund  
 Robert and Judi Newman  
 Mr. Will F. Nicholson III  
 NitaHome  
 Oak Park River Forest Community Foundation  
 Obermeyer Wood Investment Counsel  
 Mrs. Devra and Dr. Michael Ochs  
 Colleen A. O'Connor and Matthew Mcelhiney  
 Karyn O'Neil  
 Oppenheimer & Co. Inc  
 David E Oswald and Laurie Sankey  
 Ronald Otsuka  
 Kris and William Paddock  
 PEMA Foundation  
 Peters Creek Fund  
 Karen E. Pfeifer  
 PNC Institutional Asset Management  
 Carl Polhemus  
 Kathleen and Jim Potter  
 Jeanette Pryor  
 Mr. Robert Quillin and Mrs. Mary L. Quillin  
 Mr. Gary B. Randall  
 Raymond James Charitable Paddock, Bill & Kris Donor Advised Fund  
 RBC Wealth Management  
 Robert and Myra Rich  
 Cheryl Ristig & Michael Breed  
 Cassie Roach  
 Mr. Abe Rodriguez  
 Ted and Bernie Roland  
 Rose Community Foundation  
 Devra & Michael Ochs Charitable Fund  
 Mary and Olivia Ross  
 Cheryl and Dan Ryan  
 Saul Schottenstein Foundation B SavATree  
 Sean Scanlon  
 Caroline Schomp  
 Mr. and Mrs. Barney Schotters  
 Gail Schraishuhn  
 Dr. John Schultz  
 Mark Schweizer

Mrs. Cynthia Y. Scott and Mr. Peter Scott  
 Louise Scott  
 Scythe Robotics  
 Judith Seaborn  
 Ms. Ashley Cole Seidman  
 Judy Sellers  
 Shapiro Family Law  
 Mrs. Merrill Shields and Dr. M. Ray Thomasson  
 Patti Shwayder-Coffin and Steve Coffin  
 Dr. Stan F Stiefer and Carol Nelson Douglas  
 Singer Family Foundation, Inc.  
 Mr. and Mrs. Thomas J. Sisk, Jr.  
 Snooze South Broadway  
 Stephen E. Snyder  
 Ann Sperling  
 Wendy Spirek  
 Kathryn B. Spuhler  
 Emilie Ailts Staible  
 Mrs. John H. Stamper  
 Starkey Financial of Highlands Wealth Management  
 WFA FiNet  
 Ms. Lynne Stempien and Joel Shebownich  
 Sterling Ranch Development Company  
 Stifel  
 Stifel Charitable  
 Kristin and George Strompolos  
 Kenneth N. Swartz and Pamela Simko  
 Melanie Tafaro  
 Shelley and Philip Tamminga  
 Mrs. Thomas E. Taplin  
 TCI Wealth Advisors  
 Joey Terriquez  
 The Falkenstein Family Foundation  
 The Fanwood Foundation  
 The Jensen Family Charitable Foundation  
 The Kohn Family Charitable Fund  
 Jim Theye and Dee Chirafisi  
 Tonya and Stephen Tiepel  
 Tigris Sponsorship and Marketing  
 Judi and Bryan Tointon  
 Ann Torgerson  
 Two Octobers  
 U.S. Charitable Gift Trust  
 UBS Financial Service Inc.  
 United Airlines  
 Ms. Regina A. Vegliante  
 Jo Ann Von Bergen  
 Lisa Von Gunten  
 Don and Bonnie Walls  
 Walter C. Emery Family Foundation Fund  
 Ms. Ellen K. Waterman  
 WCR/Economy Data Foundation  
 Welby Gardens Company, Inc.  
 Megan and Piers Wendlandt  
 Ira Wertenteil and Cindy Powders  
 Suellen and Travis White  
 Kay M. Whitmore  
 Dr. John L. Wiberg  
 Joanna Widmann  
 Widmann Family Fund  
 Norman and Joan Wilson  
 Dawn Wood  
 Amy Wray  
 Ann H. Young  
 Young Seedlings Family Fund  
 Barbara and Jack Zable  
 Wallace A. Zellmer  
 Zorba's

**IN MEMORY**  
**In memory of Alice and Benjamin**  
 Victoria B. McCullough  
**In memory of Clayton D. Allen**  
 Sara Wilcox  
**In memory of Jill Anderson**  
 Greg P. Anderson  
**In memory of Austin DAFgiving360**  
 Diane and Larry Jensen  
 Larry Jensen  
 The Jensen Family Charitable Foundation  
**In memory of Chelsea Autrey**  
 Matthew Bracken  
 Ryan Flynn  
 Don Wood  
**In memory of Cara Bechter**  
 Elizabeth S. Almon  
 Jana Andersen  
 Venessa Barnard  
 Diane Benatar  
 Bob and Nancy Campbell Donor-Advised Fund  
 Lisa Bromberg  
 Nancy Campbell  
 Tricia Campbell  
 Dick Chilvers  
 Lia Clarke  
 Penny and Jeff Cobb  
 Community Foundation for Northeast Georgia  
 Community Foundation serving SW Colorado  
 Thomas and Suzanne Coxhead  
**In memory of Jackie Dolin**  
 Timalyn O'Neill  
**In memory of Dot Dulaney**  
 The Smith Family  
**In memory of Karen and Douglas Dunn**  
 Ms. Emily Dunn  
 Dunn Family Foundation  
**In memory of Carol Fabbri**  
 Meredith Applegate  
 Kristine Chan-Lizardo  
 DAFgiving360  
 Alex Fracassi  
 Eric Friedman  
 Krista Marks and Brent Milne Charitable Fund  
 Krista Marks  
 William Penuel and Edie Cheng  
 Shawna Slack  
**In memory of Jenny Farmer**  
 Cindy and Avery Koch  
**In memory of Ruth Fetter**  
 Heather Daymon and Zachary Conger  
**In memory of Corrine Flattery**  
 Tracy Larivee  
**In memory of Anna R. Garrey**  
 Morse Family Foundation  
**In memory of Christine Gilbert**  
 Pat K. Gilbert  
 Sue Larson  
 Dianne Piazzola  
**In memory of Harry Gordon**  
 Mr. and Mrs. Jack Wayne  
**In memory of Charles Haase**  
 Mrs. Bonnie L. Haase  
**In memory of Thomas Hawkey**  
 Breona Allen  
 Dorothy Borland  
 Chris DeJonge  
 Mr. Dennis Hamann  
 Kimm J Hamann and Karin S Hamann  
 Celeste Harris  
 Steven Hubler  
 Jeanne and Lynn Kleebe  
 Helga Richter  
 Ingrid Richter  
 Lois and Gerald Schuller  
**In memory of Mildred and Leonard Hiegert**  
 Richard and Carole Hiegert  
**In memory of Terry James**  
 Kim Snowdon  
**In memory of Jila**  
 Carroll McCorkle

## Honor/Memorial Contributors

*Gifts Received August 1, 2024 – October 31, 2024*

**In memory of Paula J. Vollmer Smith**  
 Thomas Hanggi  
 Mrs. Penny Maller  
 William and Sharon McFarlane  
 Robert-Renate and Renate Sterrett  
 Eva Teilborg  
**In memory of Laura Stark**  
 Saralyn Trainor  
**In memory of Charlie Szymczak**  
 Marvin Goldfogel  
**In memory of Loann Tran**  
 Denver Elections Division Staff  
**In memory of Louise Turnbull**  
 Laura Turnbull  
**In memory of Veronica**  
 Martha Rosson  
**In memory of Linda W. Vigor**  
 Debra Hindin-King  
**In memory of Virginia Westgaard**  
 Dee Dee Robillard  
**In memory of Ed and Ann White**  
 Dr. Andrew Sirotnak and Mr. Jamie Waring White  
 Jamie W. White  
**In memory of William R. Whitmore**  
 Kay M. Whitmore  
**In memory of George Linn Wilson**  
 Jeanette Pryor  
**In memory of Jean Yancey**  
 Carolyn Fineran  
**In memory of Brian Zable**  
 Barbara and Jack Zable

**In memory of Caroline John**  
 Evelyn and Stanley John  
**In memory of Rebecca Johnson**  
 Deb Harvey and Bonnie Kissling  
**In memory of Gary S. Kohn**  
 Mike and Sarah Killion  
 Morgan Stanley Global Impact Funding Trust  
 The Kohn Family Charitable Fund  
**In memory of Sarah W. Killion**  
 Mike and Sarah Killion  
 Morgan Stanley Global Impact Funding Trust  
 The Kohn Family Charitable Fund  
**In memory of Susan Klarreich**  
 Mike and Sarah Killion  
 Morgan Stanley Global Impact Funding Trust  
 The Kohn Family Charitable Fund  
**In memory of Udice Kohn**  
 Mike and Sarah Killion  
 Morgan Stanley Global Impact Funding Trust  
 The Kohn Family Charitable Fund  
**In memory of Laura Lukin**  
 Brittany and Stephen Hays  
**In memory of Teri S. Lutz**  
 Daniel Lutz  
**In memory of Joanne and Robert Mackay**  
 Anonymous  
**In memory of Anne Mather**  
 Terry Mather  
**In memory of Lucy Merrion**  
 Thomas Gleason  
**In memory of John C. "Jock" Mitchell, III**  
 Mrs. John C. Mitchell, III  
 Mr. and Mrs. Stephen L. Waters  
 Molly and Patrick Williams  
**In memory of Quentin "Kim" Mitchell, Jr.**  
 Mrs. John C. Mitchell, III  
 Mr. and Mrs. Stephen L. Waters  
 Molly and Patrick Williams  
**In memory of Ryan Mize**  
 Brigit Zelenak  
**In memory of Clara and Jerry O'Neil**  
 Ms. Kathleen Oberle and Dr. Kelle Oberle  
**In memory of Theo Thomas Plunkert**  
 Traci Plunkert  
**In memory of Suprane Poolswasdi**  
 Stephanie Heacox  
**In memory of Bridget Juliana Price**  
 Kenyon J. Whitehead  
**In memory of Patricia Schlager and Margaret Withrow**  
 Julie Schlager  
**In memory of Phyllis J Schweizer**  
 Mark Schweizer  
**In memory of Betty Sherer**  
 Don Ruggles and Nancy Sager-Ruggles  
**In memory of Peggy Warner Shields**  
 Mrs. Merrill Shields and Dr. M. Ray Thomasson

**In honor of Rick Levy**  
 Aaron Rashti Family Foundation  
**In honor of Carol Livingston**  
 John Livingston  
**In honor of Maryanne and Terri**  
 Ms. Kay Gilchrist  
**In honor of David McCammon**  
 Steve McCammon  
**In honor of Tom Kind and Mary McCotter**  
 Sarah Walworth  
**In honor of Mike and Heather Miller**  
 The Clinton Family Fund  
**In honor of Betsy Mordecai**  
 DAFgiving360  
 Mr. and Mrs. Adam Mordecai  
**In honor of Miki Morimoto**  
 Dennis Mormoto  
**In honor of Riya Nakazono**  
 Dr. Nadine S. Nakazona  
**In honor of Eric Olson and Van Vo**  
 Christine and Bud Blanchette  
**In honor of Gordon and Lisa Penley**  
 Thomas Family  
**In honor of Lauren Perlmutter**  
 Fidelity Charitable Gift Fund  
 Mr. and Mrs. William Fink  
 Susan and William Fink Fund  
**In honor of Susan Pharo**  
 Jessica Zucker  
**In honor of Patricia Phillips**  
 Paula S Gudder  
**In honor of Camille and Savannah Plumley**  
 Phyllis and Jack Brown  
**In honor of Robert W. Price**  
 Alison Karas  
 Anonymous  
 Kyle Reiersson  
**In honor of Adela Jean Rice**  
 Christina Thomas  
**In honor of Cheryl Ristig and Michael Breed's 50th Anniversary**  
 Cheryl Ristig & Michael Breed  
**In honor of Ellie and Katie Roach**  
 Cisco Systems, Inc.  
 Cassie Roach  
**In honor of Penelope (Pippa) Robinson**  
 Kevin Haas  
**In honor of Dina Robke**  
 Ken Robke  
**In honor of Alison Saylor**  
 Susan Richardson  
**In honor of The Scott Grandchildren**  
 BJ Scott  
**In honor of James Strayer**  
 Anonymous  
**In honor of Bea Taplin**  
 Anonymous  
**In honor of Nancy Thomas**  
 Ms. Liesl Thomas  
**In honor of Brian Vogt**  
 Lisa Farber Miller and David Miller  
 Arlene and Barry Hirschfeld  
 David Miller  
 Patrick Pratt  
 Caroline Schomp  
 Judy Sellers  
 Ms. Linda R. Zinn  
**In honor of Caroline & Lucy Wool**  
 Celia and Kenneth Wool

## 2025 Board of Trustees

### OFFICERS

Mary Lee Chin, Board Chair  
 Marianne Sulser, Vice Chair  
 Abe Rodriguez, Treasurer  
 Diane Barrett, Secretary  
 Mike Imhoff, Immediate Past Chair

### TERM TRUSTEES

Jose Carredano  
 Dr. Clint Carroll  
 Andrew Cullen  
 Papa M. Dia  
 Melissa Eliot  
 Veronica Figoli  
 Cory Freyer  
 Dr. Dorothy Horrell

Ding Wen Hsu  
 Suzanne Johnson  
 Darryl Jones  
 Christopher Leach  
 Wy Livingston  
 Ron Otsuka  
 Jon Rauchway

Yrma Rico  
 Alan Salazar  
 Kendra Sandoval  
 Emma Schwarz  
 Hollie Seeley  
 Brad Stevinson  
 Mike Toia

### MAYORAL TRUSTEES

Christine Baugh  
 Nina Casanova  
 Tiffany Herrick  
 Eliot Hoyt

### LIFE TRUSTEE

Beatrice Taplin  
 TRUSTEES EMERITI  
 Kathy Hodgson  
 Judi Newman  
 Scott Richards

### EX-OFFICIO TRUSTEES

Mike Imhoff, President,  
 Denver Botanic Gardens Endowment, Inc.  
 Jolon Clark, Denver Parks & Recreation  
 Julie Egan, Denver Debutante Ball  
 Amy Mower, President,  
 Garden Club of Denver  
 Colleen O'Connor, President, Denver Botanic Gardens Guild



DENVER BOTANIC  
**GARDENS**

Stay connected to the Gardens!  
Use #MyDBG  
[botanicgardens.org](http://botanicgardens.org)

